

MastaTape Universal

COMPOUND



TECH DATA

MastaTape Universal is an air drying compound for bedding tape into recessed edges and butt joints for plasterboard systems. It is also suitable for second coating joints, for internal and external angles as well as fastener heads. MastaTape is ideal for use with mechanical taping and setting tools, minimising time spent cleaning and mixing. Perfect for projects where access to water is limited.

MastaTape Universal is the compound of choice for OPAL plasterboard.



Performance

Efficient

Saves time by reducing mixing required and minimising the need to clean tools after each gauge.

Body

Smooth, creamy and ready to use, MastaTape can be easily adjusted to the desired consistency by electric mixer.

Taping

Flows freely from mechanical tools for fast tape application, and effortless second coating.

Drying

Efficient drying with time available for fine edges when feathering or re-trowelling.

Strength

Provides a strong joint when used with paper tape. Ideal for internals.

Sustainable

Low VOC meeting sustainable building project requirements.

Benefits

- > Fast application
- > Strong tape bond
- > Ready to use
- > Reduce cleaning and mixing time
- > Level+ Technology for premium finish with OPAL

Product Information

SIZE	16kg bucket		
TYPE	Air drying premixed paste		
DRYING TIME	24 hours		
SYSTEM USAGE	<input checked="" type="checkbox"/> Bedding	<input checked="" type="checkbox"/> Second coat	
	<input checked="" type="checkbox"/> Standard	<input checked="" type="checkbox"/> Fire rated	<input checked="" type="checkbox"/> Wet area systems
VOC	<50g/L as VOC content per coating		
SPECIFIC DENSITY	1.6 g/cc		

MastaTape Universal

COMPOUND



TECH DATA

Taping application

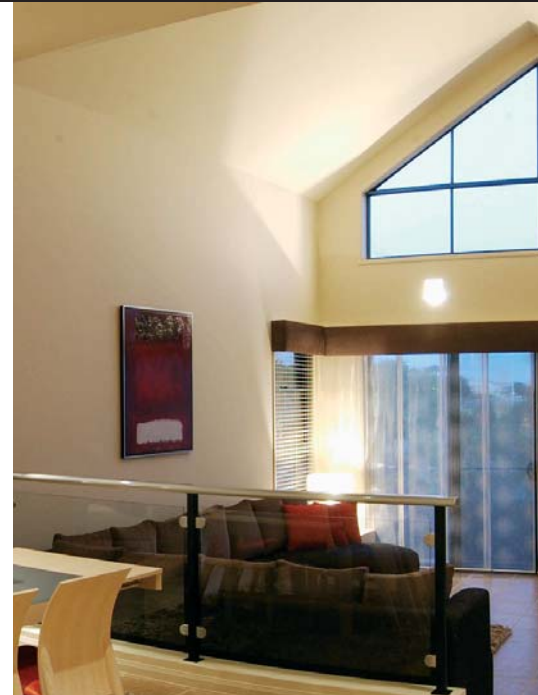
- MastaTape is ready to use. If necessary, add clean tap water in small amounts and mix until the desired consistency is achieved. Always use clean tools and containers.
- As with all compounds, excessive thinning may cause cracking or increased shrinkage. Do not mix with any other material.
- Use Knauf MastaMate Paper Tape with MastaTape.
- Maintain a minimum 10°C working temperature during application and drying.
- Allow MastaTape to dry completely between coats.
- For the strongest ready-mix joint, use MastaTape for the second coat.
- MastaLite may be used as an alternative to MastaTape for the second coat. Setting cements like MastaBase and MastaLongset must not be applied over air drying compounds.

Optimise product performance by:

- Firmly closing the lid to prevent the compound from drying out.
- Washing tools before product dries and hardens.
- Storing in a dry, well ventilated environment fully protected from the weather.

UltraHome System with LEVEL+™ Technology

- Achieve a superior surface for painting using MastaTape Universal for all three coats on OPAL plasterboard joints.
- Best results will be achieved with 3 coats of MastaTape Universal. As a minimum, MastaTape Universal is recommended for the finishing coat combined with either MastaBase or MastaLongset for the first two coats.
- Due to Level+ Technology, the OPAL plasterboard and the MastaTape Universal closely match in texture and absorption, creating a superior surface for painting.
- Sand lightly to a smooth finish using 150 grit paper or 180 sanding mesh.
- A three coat paint system must be used in accordance with AS/NZS 2311 *Guide to the painting of buildings*. This consists of a sealer undercoat and two coats of paint.
- Both the quality of the paint and how it is applied have a large effect on the finished appearance of the plasterboard. The paint manufacturer's instructions for application must be followed. To achieve the best result it is strongly recommended that each coat of the three coat paint system be roller applied.



Quality
ISO 9001

SAI GLOBAL

Knauf products manufactured in Australia are produced in accordance with quality systems certified as complying with AS/NZS ISO 9001:2008.

Warranty

Knauf's products are guaranteed by a 10 Year Warranty.

For details visit

knaufplasterboard.com.au
knaufplasterboard.co.nz

Technical Advice

AU 1300 724 505

NZ 0800 884 326